

Anti-CD45, mouse monoclonal (BS65)

BSH-9030-100 (0.1ml), BSH-9030-1 (1ml)



| | |
|----------------------------|--------------------------------------|
| Clonality: | Mouse monoclonal antibody |
| Clone: | BS65 |
| Application: | IHC-P (1:100 – 1:400) |
| Species Reactivity: | Human |
| Control tissues: | Lymph node, tonsil, appendix |
| Buffer: | TRIS with 0.03% sodium azide, pH 7,2 |
| Storage: | Store at 4°C |

Description

CD45 is transmembrane protein that is present on all differentiated hematopoietic cells (including basophils, granulocytes, lymphocytes, macrophages / histiocytes, mast cells, monocytes, dendritic cells, medullary thymocytes, plasma cells). Erythrocytes and their immediate progenitors do not express CD45 antigen. This antigen is used in routine immunohistochemistry to differentiate between immune cell types, as well as to differentiate hematological malignancies from other tumors. CD 45 is a good marker for AML, ALCL and most B- and T-cell lymphomas. Epithelial tumors, follicular dendritic cell sarcomas, germ cell tumors, melanoma, mesothelioma do not express CD45.

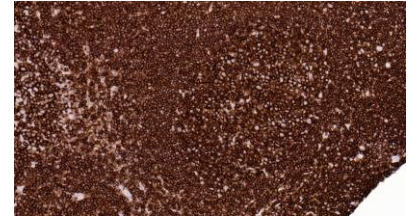
Protocol

After paraffin removing and rehydration:

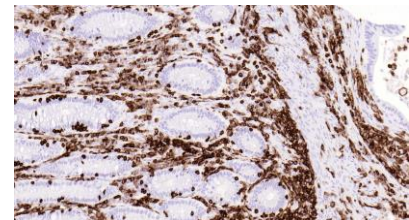
1. Pre-treatment: PT-module HIER pH9 (20min at 98°C)
2. Wash (TBS-Tween in all washing steps)
3. Primary antibody: CD45 1:100 – 1:400, 30 min.
4. Wash
5. Peroxidase blocking (3% H₂O₂), 10 min.
6. Wash
7. One step HRP-polymer detection, 30 min
8. Wash x2
9. DAB-Substrate, 10 min
10. Aqua
11. CuSO₄ -post enhancement, 5 min
12. Aqua

Counter staining, Bluing, dehydration, clearing, and mounting.

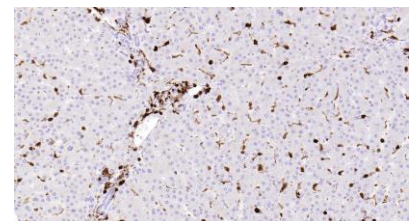
Dilution of concentrated antibody depends on the pre-treatment method and detection system used. Above protocol used in Optibodies evaluation and is meant as a reference. Final working dilution and protocol applied needs to be determined by the user always.



Tonsil section has been stained using CD45 antibody (Clone BS65) with dilution 1:200. CD45 is strongly expressed in germinal center cells, mantle zone and parafollicular lymphocytes.



Colon section has been stained using CD45 antibody (Clone BS65) with dilution 1:200. CD45 positive staining is seen in intra- and interepithelial lymphocytes.



Liver section has been stained using CD45 antibody (Clone BS65) with dilution 1:200. CD45 positive staining is seen in hematopoietic cells around portal area, in lymphocytes and Kupffer cells.