

Anti-CD45, mouse monoclonal (BS65)

BSH-9030-100 (0.1ml), BSH-9030-1 (1ml)



Clonality:	Mouse monoclonal antibody
Clone:	BS65
Application:	IHC-P (1:100 – 1:400)
Species Reactivity:	Human (others not tested)
Control tissues:	Lymph node, tonsil, appendix
Buffer:	TRIS with 0.03% sodium azide, pH 7,2
Storage:	Store at 4°C

Description

CD45 is transmembrane protein that is present on all differentiated hematopoietic cells (including basophils, granulocytes, lymphocytes, macrophages / histiocytes, mast cells, monocytes, dendritic cells, medullary thymocytes, plasma cells). Erythrocytes and their immediate progenitors do not express CD45 antigen. This antigen is used in routine immunohistochemistry to differentiate between immune cell types, as well as to differentiate hematological malignancies from other tumors. CD 45 is a good marker for AML, ALCL and most B- and T-cell lymphomas. Epithelial tumors, follicular dendritic cell sarcomas, germ cell tumors, melanoma, mesothelioma do not express CD45.

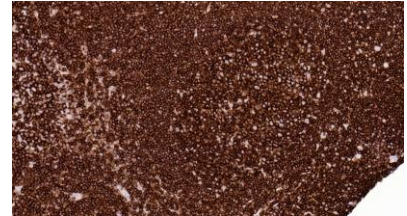
Protocol

After paraffin removing and rehydration:

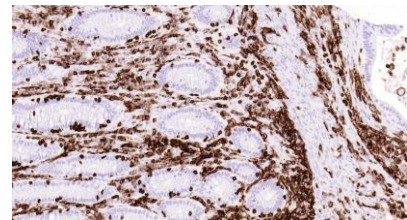
1. Pretreatment: HIER pH9
2. Wash (TBS-Tween)
3. Primary antibody: CD45 1:100 - 1:400, 30 min.
4. Wash
5. 3% H₂O₂, 10 min.*
6. Wash
7. BioSite Histo HRP One-Step Polymer (KDB-10046), 30 min
8. Wash
9. Wash
10. DAB high contrast Kit (BCB-20032), 10 min
11. Aqua
12. CuSO₄ -post enhancement, 5 min
13. Aqua
14. Counter staining in diluted Mayer, 1 min
15. Bluing, 7 min in tap water
16. Dehydration, clearing and mounting

Dilution of this concentrated antibody depends on the detection system used and the final working dilution need to always be determined by the user.

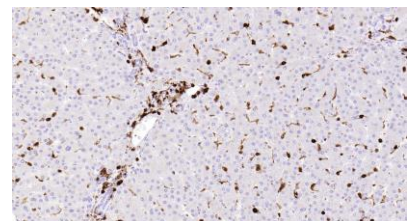
* Optional; Endogenous peroxidase blocking can also be done before primary antibody incubation.



Tonsil section has been stained using CD45 antibody (Clone BS65) with dilution 1:200. CD45 is strongly expressed in germinal center cells, mantle zone and parafollicular lymphocytes.



Colon section has been stained using CD45 antibody (Clone BS65) with dilution 1:200. CD45 positive staining is seen in intra- and interepithelial lymphocytes.



Liver section has been stained using CD45 antibody (Clone BS65) with dilution 1:200. CD45 positive staining is seen in hematopoietic cells around portal area, in lymphocytes and Kupffer cells.