

## Anti-Somatostatin, mouse monoclonal (BS16)

BSH-7849-100 (0,1ml), BSH-7849-1 (1 ml)



<b>Clonality:</b>	Mouse monoclonal antibody
<b>Clone:</b>	BS16
<b>Application:</b>	IHC-P (1:100 – 1:400)
<b>Species Reactivity:</b>	Human
<b>Control tissues:</b>	Pancreas
<b>Buffer:</b>	TRIS with 0.03% sodium azide, pH 7,2
<b>Storage:</b>	Store at 4°C

### Description

Somatostatin is expressed throughout the body and inhibits the release of numerous secondary hormones by binding to high-affinity G- protein-coupled somatostatin receptors. This hormone is an important regulator of the endocrine system through its interactions with pituitary growth hormone, thyroid stimulating hormone, and most hormones of the gastrointestinal tract. Somatostatin also affects rates of neurotransmission in the central nervous system and proliferation of both normal and tumorigenic cells.

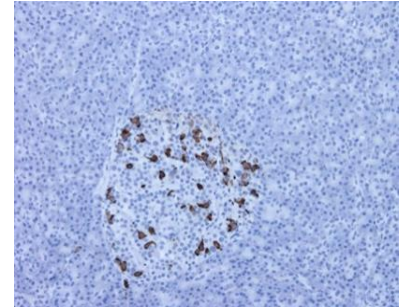
### Protocol

After paraffin removing and rehydration:

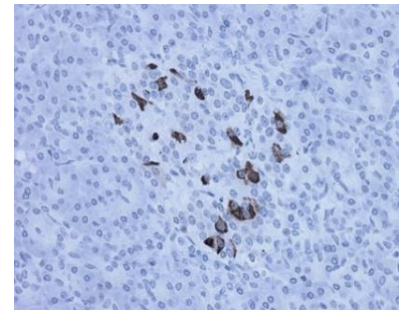
1. Pre-treatment: PT-module HIER pH9 (20min at 98°C)
2. Wash (TBS-Tween in all washing steps)
3. Primary antibody: Somatostatin 1:100 – 1:400, 30 min.
4. Wash
5. Peroxidase blocking (3% H<sub>2</sub>O<sub>2</sub>), 10 min.
6. Wash
7. One step HRP-polymer detection, 30 min
8. Wash x2
9. DAB-Substrate, 10 min
10. Aqua
11. CuSO<sub>4</sub> -post enhancement, 5 min
12. Aqua

Counter staining, Bluing, dehydration, clearing, and mounting.

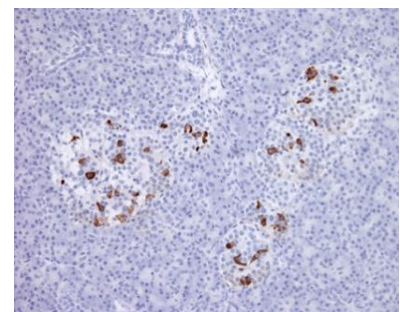
Dilution of concentrated antibody depends on the pre-treatment method and detection system used. Above protocol used in Optibodies evaluation and is meant as a reference. Final working dilution and protocol applied needs to be determined by the user always.



Pancreas section has been stained using somatostatin antibody (Clone: BS16) with 1:200 dilution. Somatostatin secreted delta cells of pancreas have strong cytoplasmic label.



Pancreas section has been stained using somatostatin antibody (Clone: BS16) with 1:200 dilution. Somatostatin secreted delta cells of pancreas have strong cytoplasmic label.



Pancreas section has been stained using somatostatin antibody (Clone: BS16) with 1:200 dilution. Somatostatin secreted delta cells of pancreas have strong cytoplasmic label.