

## Anti-Somatostatin, mouse monoclonal (BS16)

BSH-7849-100 (0.1 ml), BSH-7849-1 (1 ml)



<b>Clonality:</b>	Mouse monoclonal antibody
<b>Clone:</b>	BS16
<b>Application:</b>	IHC-P (1:100 – 1:400)
<b>Species Reactivity:</b>	Human
<b>Control tissues:</b>	Pancreas
<b>Buffer:</b>	TRIS with 0.03% sodium azide, pH 7.2
<b>Storage:</b>	Store at 4°C

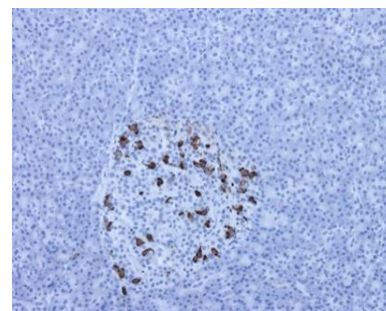
## Description

Somatostatin is expressed throughout the body and inhibits the release of numerous secondary hormones by binding to high-affinity G- protein-coupled somatostatin receptors. This hormone is an important regulator of the endocrine system through its interactions with pituitary growth hormone, thyroid stimulating hormone, and most hormones of the gastrointestinal tract. Somatostatin also affects rates of neurotransmission in the central nervous system and proliferation of both normal and tumorigenic cells.

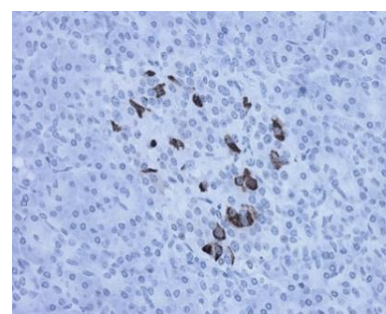
## Protocol

1. Deparaffinize and rehydrate tissue section
2. Wash: aqua dest, 2×5 min
3. Pre-treatment: PT-module HIER pH 9.0 (20min at 98°C)
4. H<sub>2</sub>O<sub>2</sub> (concentration 3%), 10 min
5. Wash: PBS or TBS buffer, 2×5 min
6. Primary antibody diluted as recommended, 30 min
7. Wash: PBS or TBS buffer, 2×5 min
8. One step HRP-polymer detection, 30 min
9. Wash: PBS or TBS buffer, 2×5 min
10. DAB Substrate, 8 min
11. Wash: aqua dest, 2×2 min
12. Counterstain, dehydrate and coverslip

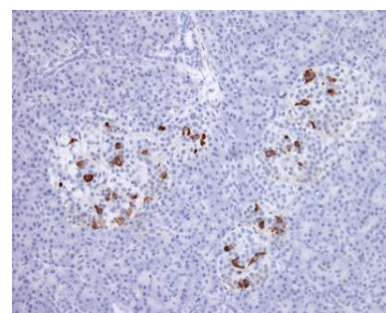
Dilution of concentrated antibody depends on the pre-treatment method and detection system used. Above protocol used in Optibodies evaluation and is meant as a reference. Final working dilution and protocol applied needs to be determined by the user always.



Pancreas section has been stained using somatostatin optibody (Clone: BS16) with 1:200 dilution. Somatostatin secreted delta cells of pancreas have strong cytoplasmic label.



Pancreas section has been stained using somatostatin optibody (Clone: BS16) with 1:200 dilution. Somatostatin secreted delta cells of pancreas have strong cytoplasmic label.



Pancreas section has been stained using somatostatin optibody (Clone: BS16) with 1:200 dilution. Somatostatin secreted delta cells of pancreas have strong cytoplasmic label.