

Anti-Glucagon, mouse monoclonal (BS71)

BSH-7443-100 (0.1 ml), BSH-7443-1 (1 ml)



Clonality:	Mouse monoclonal antibody
Clone:	BS71
Application:	IHC-P (1:100 – 1:400)
Species Reactivity:	Human
Control tissues:	Pancreas
Buffer:	TRIS with 0.03% sodium azide, pH 7.2
Storage:	Store at 4°C

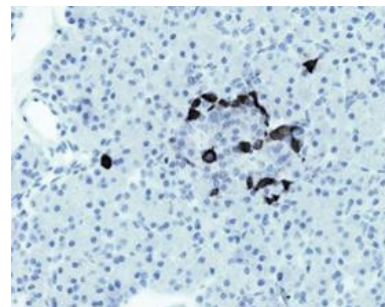
Description

Glucagon, is a pancreatic hormone that counteracts the glucose-lowering action of insulin by stimulating glycogenolysis and gluconeogenesis. Glucagon is a ligand for a specific G-protein linked receptor whose signalling pathway controls cell proliferation. Two of the other peptides are secreted from gut endocrine cells and promote nutrient absorption through distinct mechanisms. Finally, the fourth peptide is similar to glicentin, an active enteroglucagon. Glucagon is secreted in the alpha cells of the islets of Langerhans. GLP-1, GLP-2, oxyntomodulin and glicentin are secreted from enteroendocrine cells throughout the gastrointestinal tract. GLP1 and GLP2 are also secreted in selected neurons in the brain.

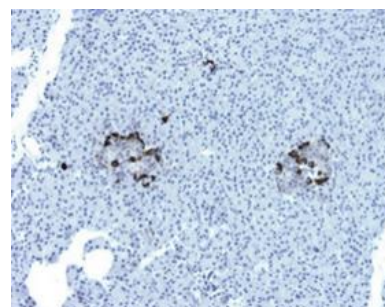
Protocol

1. Deparaffinize and rehydrate tissue section
2. Wash: aqua dest, 2×5 min
3. Pre-treatment: PT-module HIER pH 9.0 (20min at 98°C)
4. H₂O₂ (concentration 3%), 10 min
5. Wash: PBS or TBS buffer, 2×5 min
6. Primary antibody diluted as recommended, 30 min
7. Wash: PBS or TBS buffer, 2×5 min
8. One step HRP-polymer detection, 30 min
9. Wash: PBS or TBS buffer, 2×5 min
10. DAB Substrate, 8 min
11. Wash: aqua dest, 2×2 min
12. Counterstain, dehydrate and coverslip

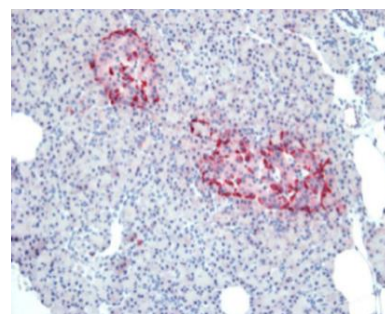
Dilution of concentrated antibody depends on the pre-treatment method and detection system used. Above protocol used in Optibodies evaluation and is meant as a reference. Final working dilution and protocol applied needs to be determined by the user always.



Pancreas section has been stained using glucagon optibody (Clone: BS71) with 1:200 dilution. Glucagon secreted alpha cells of pancreas have strong cytoplasmic label.



Pancreas section has been stained using glucagon optibody (Clone: BS71) with 1:200 dilution. Glucagon secreted alpha cells of pancreas have strong cytoplasmic label.



Pancreas section has been stained using glucagon optibody (Clone: BS71) with 1:200 dilution. Glucagon secreted alpha cells of pancreas have strong cytoplasmic label.