

Anti-Cytokeratin 17, mouse monoclonal (BS55)

BSH-7311-100 (0.1 ml), BSH-7311-1 (1 ml)



Clonality:	Mouse monoclonal antibody
Clone:	BS55
Application:	IHC-P (1:100 – 1:400), IHC-Fro
Species Reactivity:	Human
Control tissues:	Skin, tonsil
Buffer:	TRIS with 0.03% sodium azide, pH 7.2
Storage:	Store at 4°C

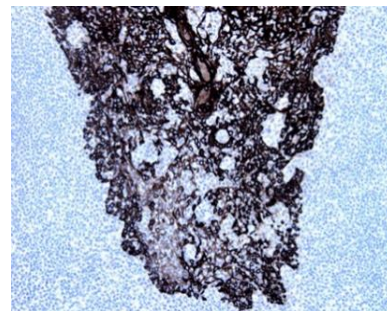
Description

Cytokeratin 17, also known as KRT17, it is the type I intermediate filament chain keratin 17. It is found in nail beds, hair follicles, sebaceous glands, and other epidermal appendages. Mutations in this gene lead to Jackson-Lawler type pachynychia congenita and steatocystoma multiplex. May play a role in the formation and maintenance of various skin appendages, specifically in determining shape and orientation of hair. May be a marker of basal cell differentiation in complex epithelia and therefore indicative of a certain type of epithelial "stem cells". May act as an autoantigen in the immunopathogenesis of psoriasis, with certain peptide regions being a major target for autoreactive T-cells and hence causing their proliferation. It is involved in tissue repair.

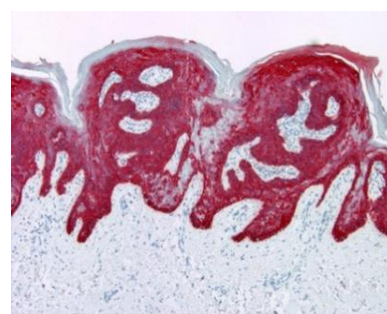
Protocol

1. Deparaffinize and rehydrate tissue section
2. Wash: aqua dest, 2×5 min
3. Pre-treatment: PT-module HIER pH 9.0 (20min at 98°C)
4. H₂O₂ (concentration 3%), 10 min
5. Wash: PBS or TBS buffer, 2×5 min
6. Primary antibody diluted as recommended, 30 min
7. Wash: PBS or TBS buffer, 2×5 min
8. One step HRP-polymer detection, 30 min
9. Wash: PBS or TBS buffer, 2×5 min
10. DAB Substrate, 8 min
11. Wash: aqua dest, 2×2 min
12. Counterstain, dehydrate and coverslip

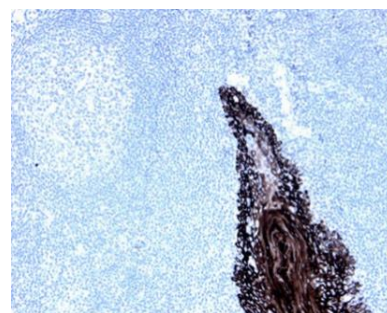
Dilution of concentrated antibody depends on the pre-treatment method and detection system used. Above protocol used in Optibodies evaluation and is meant as a reference. Final working dilution and protocol applied needs to be determined by the user always.



Tonsil section has been stained using CK17 optibody (Clone: BS55) with 1:200 dilution. Epithelia of tonsil are stained intensively.



Skin section has been stained using CK17 optibody (Clone: BS55) with 1:200 dilution. Epidermis of the skin stained with permanent red chromogen.



Tonsil section has been stained using CK17 optibody (Clone: BS55) with 1:200 dilution. Epithelia of tonsil are stained intensively.