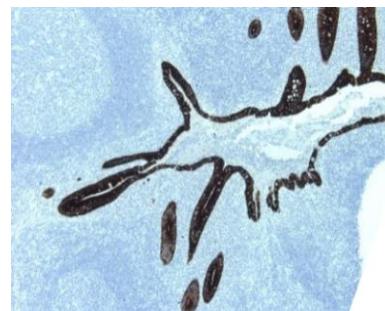


Anti-Cytokeratin 19, mouse monoclonal (BS23)

BSH-7240-100 (0.1 ml), BSH-7240-1 (1 ml)

Clonality:	Mouse monoclonal antibody
Clone:	BS23
Application:	IHC-P (1:100 – 1:400), IHC-Fro
Species Reactivity:	Human
Control tissues:	Tonsil, liver, appendix
Buffer:	TRIS with 0.03% sodium azide, pH 7.2
Storage:	Store at 4°C



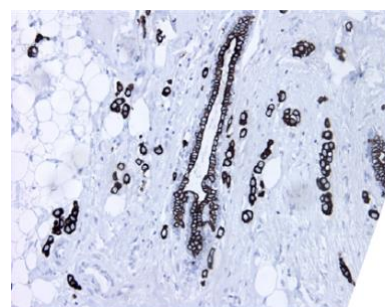
Appendix section has been stained using CK19 optibody (Clone: BS23) with 1:200 dilution. Columnar epithelia of appendix is strongly stained.

Description

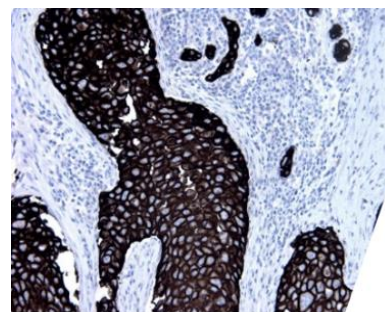
Cytokeratin 19 is a member of the keratin family. The keratins are intermediate filament proteins responsible for the structural integrity of epithelial cells and are subdivided into cytokeratins and hair keratins. The type I cytokeratins consist of acidic proteins which are arranged in pairs of heterotypic keratin chains. Unlike its related family members, this smallest known acidic cytokeratin is not paired with a basic cytokeratin in epithelial cells. It is specifically expressed in the periderm, the transiently superficial layer that envelopes the developing epidermis.

Protocol

1. Deparaffinize and rehydrate tissue section
2. Wash: aqua dest, 2×5 min
3. Pre-treatment: PT-module HIER pH 9.0 (20min at 98°C)
4. H₂O₂ (concentration 3%), 10 min
5. Wash: PBS or TBS buffer, 2×5 min
6. Primary antibody diluted as recommended, 30 min
7. Wash: PBS or TBS buffer, 2×5 min
8. One step HRP-polymer detection, 30 min
9. Wash: PBS or TBS buffer, 2×5 min
10. DAB Substrate, 8 min
11. Wash: aqua dest, 2×2 min
12. Counterstain, dehydrate and coverslip



Lobular breast carcinoma section has been stained using CK19 optibody (Clone: BS23) with 1:200 dilution. CK19 stains breast lobular carcinoma cells with strong intensity.



Ductal breast carcinoma section has been stained using CK19 optibody (Clone: BS23) with 1:200 dilution. Carcinoma cells are strongly stained.

Dilution of concentrated antibody depends on the pre-treatment method and detection system used. Above protocol used in Optibodies evaluation and is meant as a reference. Final working dilution and protocol applied needs to be determined by the user always.