

## Anti-HER2, mouse monoclonal (BS24)

BSH-7182-100 (0.1 ml), BSH-7182-1 (1 ml)



<b>Clonality:</b>	Mouse monoclonal antibody
<b>Clone:</b>	BS24
<b>Application:</b>	IHC-P (1:100 – 1:400)
<b>Species Reactivity:</b>	Human
<b>Control tissues:</b>	HER2 positive breast cancer cases with different graduses
<b>Buffer:</b>	TRIS with 0.03% sodium azide, pH 7.2
<b>Storage:</b>	Store at 4°C

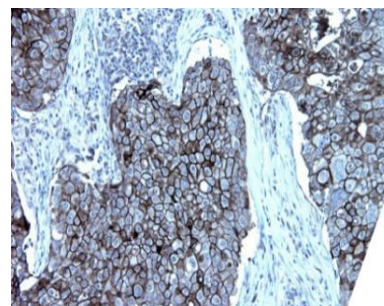
### Description

HER2/ERBB2, is a member of the epidermal growth factor (EGF) receptor family of receptor tyrosine kinases. This protein has no ligand binding domain of its own and therefore cannot bind growth factors. However, it does bind tightly to other ligand-bound EGF receptor family members to form a heterodimer, stabilizing ligand binding and enhancing kinase-mediated activation of downstream signaling pathways, such as those involving mitogen-activated protein kinase and phosphatidylinositol-3 kinase. Amplification and/or overexpression of this gene has been reported in numerous cancers, including breast and gastric tumors. Alternative splicing results in several additional transcript variants, some encoding different isoforms and others that have not been fully characterized. Immunohistochemical staining of HER-2 protein is graded as 0/1+, 2+ and 3+.

### Protocol

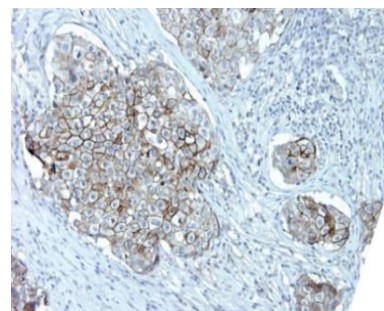
1. Deparaffinize and rehydrate tissue section
2. Wash: aqua dest, 2×5 min
3. Pre-treatment: PT-module HIER pH 9.0 (20min at 98°C)
4. H<sub>2</sub>O<sub>2</sub> (concentration 3%), 10 min
5. Wash: PBS or TBS buffer, 2×5 min
6. Primary antibody diluted as recommended, 30 min
7. Wash: PBS or TBS buffer, 2×5 min
8. One step HRP-polymer detection, 30 min
9. Wash: PBS or TBS buffer, 2×5 min
10. DAB Substrate, 8 min
11. Wash: aqua dest, 2×2 min
12. Counterstain, dehydrate and coverslip

Dilution of concentrated antibody depends on the pre-treatment method and detection system used. Above protocol used in Optibodies evaluation and is meant as a reference. Final working dilution and protocol applied needs to be determined by the user always.



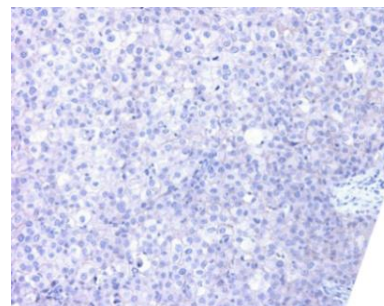
**HER2 - Ductal breast cancer, 3+.**

Breast carcinoma section has been stained using HER2 optibody (Clone: BS24) with 1:200 dilution. Carcinoma cells are HER2 positive with strong membranous label.



**HER2 - Ductal breast cancer, 3+.**

Breast carcinoma section has been stained using HER2 optibody (Clone: BS24) with 1:200 dilution. Carcinoma cells are HER2 positive with strong to moderate membranous label.



**HER2 – Ductal breast cancer, 0/1+.**

Breast carcinoma section has been stained using HER2 optibody (Clone: BS24) with 1:200 dilution. Carcinoma cells are HER2 negative without label.