

Anti-Cytokeratin 5 (CK-HMW), mouse monoclonal (BS42)



BSH-7123-100 (0,1ml), BSH-7123-1 (1 ml)

Clonality:	Mouse monoclonal antibody
Clone:	BS42
Application:	IHC-P (1:100 – 1:400), IHC-Fro
Species Reactivity:	Human, mouse, sheep
Control tissues:	Esophagus, prostate, tonsil
Alias names:	CK5, CK-HMW, KRT5
Buffer:	TRIS with 0.03% sodium azide, pH 7,2
Storage:	Store at 4°C

Description

Cytokeratin 5 (CK 5) is a member of the keratin gene family. Biochemically, most members of the CK family fall into one of two classes, type I (acidic polypeptides) and type II (basic polypeptides). The type II cytokeratins consist of basic or neutral proteins which are arranged in pairs of heterotypic keratin chains co-expressed during differentiation of simple and stratified epithelial tissues. This type II cytokeratin is specifically expressed in the basal layer of the epidermis with family member KRT14. The type II cytokeratins are clustered in a region of chromosome 12q12-q13. At least one member of the acidic family and one member of the basic family is expressed in all epithelial cells. Cytokeratin 5 is expressed in normal basal cells.

Protocol

After paraffin removing and rehydration:

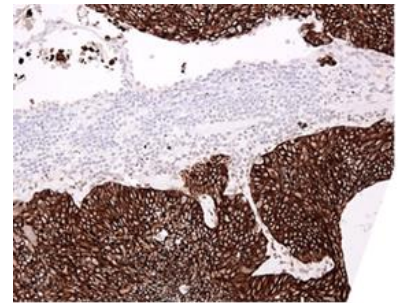
1. Pretreatment: HIER pH9
2. Wash (TBS-Tween)
3. Primary antibody: Cytokeratin 5 1:100 – 1:400, 30 min.
4. Wash
5. 3% H₂O₂, 10 min.*
6. Wash
7. BioSite Histo HRP One-Step Polymer (KDB-10007), 30 min
8. Wash
9. Wash
10. DAB high contrast Kit (BCB-20032), 10 min
11. Aqua
12. CuSO₄ -post enhancement, 5 min
13. Aqua
14. Counter staining in diluted Mayer, 1 min
15. Bluing, 7 min in tap water
16. Dehydration, clearing and mounting

Dilution of this concentrated antibody depends on the detection system used and the final working dilution need to always be determined by the user.

* Optional; Endogenous peroxidase blocking can also be done before primary antibody incubation.



Prostate section has been stained using CK5 optibody (Clone: BS42) with 1:200 dilution. Prostate basal cells stained strongly.



Lung squamous cell carcinoma section has been stained using CK5 optibody (Clone: BS42) with 1:200 dilution. Lung squamous cell carcinoma stained intensively.



Esophagus section has been stained using CK5 optibody (Clone: BS42) with 1:200 dilution. All layers of squamous epithelium have strong label.