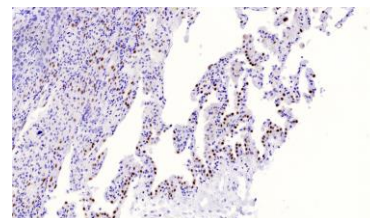


Anti-TTF1, rabbit monoclonal (BSR40)

BSH-4020-100 (0.1 ml), BSH-4020-1 (1 ml)



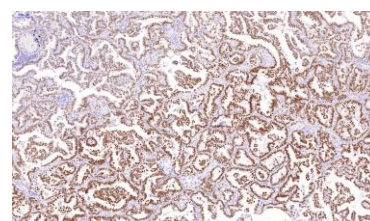
Clonality:	Rabbit monoclonal antibody
Clone:	BSR40
Application:	IHC-P (1:100 – 1:200)
Species Reactivity:	Human
Control tissues:	Normal lung and thyroid
Buffer:	TRIS with 0.03% sodium azide, pH 7.2
Storage:	Store at 4°C



Normal lung: TTF1 optibody (BSR40) with 1:100 dilution. Pneumocyte II, Clara and basal cells (high expressors) show strong nuclear staining.

Description

Thyroid transcription factor, also called thyroid specific enhancer binding nuclear protein (38 kDa), that regulates transcription activity of thyroid (thyroglobulin, thyroid peroxidase, sodium-iodide transport protein, calcitonin and MHC class I) and lung (surfactant proteins A, B and C, Clara cell secretory protein). The expression of TTF1 is confined to follicular epithelial cells and the C-cells in the thyroid, and to the type II pneumocytes and the Clara cells in the lung. In tumor diagnostics TTF1 distinguish primary (TTF+) vs. metastatic (usually TTF1-) lung carcinoma (LCA), pulmonary adenocarcinoma (TTF1+) from squamous cell Ca (usually TTF1 -), pleural lung Ca (TTF1+) vs. mesothelioma (TTF1 -) and pulmonary small cell Ca (TTF1+) vs. Merkel cell Ca (TTF -). Mucinous lung adenocarcinoma is usually TTF1 negative.



Lung adenocarcinoma: TTF1 optibody (BSR40) with 1:100 dilution. Almost all neoplastic cells show strong nuclear staining.

Protocol

1. Deparaffinize and rehydrate tissue section
2. Wash: aqua dest, 2×5 min
3. Pre-treatment: PT-module HIER pH 9.0 (20min at 98°C)
4. H₂O₂ (concentration 3%), 10 min
5. Wash: PBS or TBS buffer, 2×5 min
6. Primary antibody diluted as recommended, 30 min
7. Wash: PBS or TBS buffer, 2×5 min
8. One step HRP-polymer detection, 30 min
9. Wash: PBS or TBS buffer, 2×5 min
10. DAB Substrate, 8 min
11. Wash: aqua dest, 2×2 min
12. Counterstain, dehydrate and coverslip

Dilution of concentrated antibody depends on the pre-treatment method and detection system used. Above protocol used in Optibodies evaluation and is meant as a reference. Final working dilution and protocol applied needs to be determined by the user always.