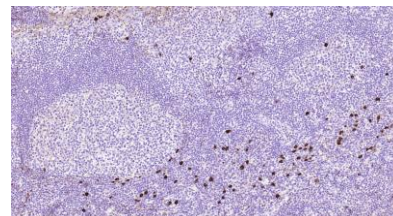


Anti-IgG4, Rabbit monoclonal (BSR27)

BSH-4011-100 (0,1ml), BSH-4011-1 (1 ml)



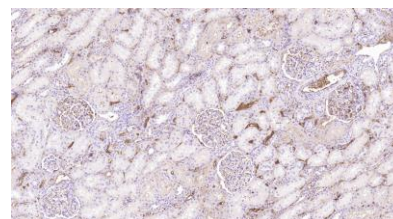
Clonality:	Rabbit monoclonal antibody
Clone:	BSR27
Application:	IHC-P (1:100 – 1:400)
Species Reactivity:	Human
Control tissues:	Appendix, colon
Buffer:	TRIS with 0.03% sodium azide, pH 7,2
Storage:	Store at 4°C



Tonsil section has been stained using IgG4 antibody (Clone: BSR27) with 1:200 dilution. IgG4 plasma cells stain intensely.

Description

IgG4 is the smallest subclass in the IgG family, being produced only in later stages of immune response. Also shown to be associated with IgE-mediated allergy. Main diagnostic value lies in IgG4-related diseases (IgG4-RD), where IgG4 production is elevated with chronic inflammation. For example one direct manifestation IgG4-RD is tubulointestinal nephritis and membranous glomerulo nephritis.

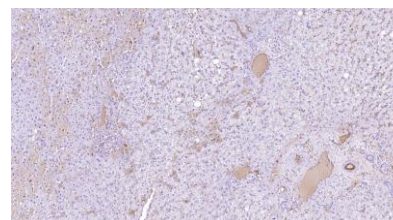


Kidney section has been stained IgG4 antibody (Clone: BSR27) with 1:200 dilution.

Protocol

After paraffin removing and rehydration:

1. Pretreatment: HIER pH9
2. Wash (TBS-Tween)
3. Primary antibody: IgG4 1:100 – 1:400, 30 min.
4. Wash
5. 3% H₂O₂, 10 min.*
6. Wash
7. BioSite Histo HRP One-Step Polymer (KDB-10046), 30 min
8. Wash
9. Wash
10. DAB high contrast Kit (BCB-20032), 10 min
11. Aqua
12. CuSO₄ -post enhancement, 5 min
13. Aqua
14. Counter staining in diluted Mayer, 1 min
15. Bluing, 7 min in tap water
16. Dehydration, clearing and mounting



Liver section has been stained IgG4 antibody (Clone: BSR27) with 1:200 dilution.

Dilution of this concentrated antibody depends on the detection system used and the final working dilution need to always be determined by the user.

* Optional; Endogenous peroxidase blocking can also be done before primary antibody incubation.