

Anti-PDL1, rabbit monoclonal (BSR90)

BSH-4003-100 (0.1 ml), BSH-4003-1 (1 ml)



Clonality:	Rabbit monoclonal antibody
Clone:	BSR90
Application:	IHC-P (1:100 – 1:400)
Species Reactivity:	Human
Control tissues:	Tonsil, Placenta, NSCLC cases
Buffer:	TRIS with 0.03% sodium azide, pH 7.2
Storage:	Store at 4°C

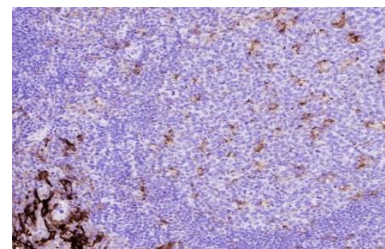
Description

Programmed cell death ligand 1 (PDL1, CD274) is a type 1 transmembrane protein with role in the regulation of cellular immune responses. PDL1 and its receptor PD-1, interacts and regulating T lymphocyte activation and immune tolerance. Blockade of PD-L1/PD-1 interaction, it enhances the antitumor activity of T lymphocytes. PDL1 is commonly expressed in many tissues and cells, eg. placenta, tonsil and histiocytes. It over expressed in many human tumors such as non-small cell lung carcinoma (NSCLC), melanoma, DLBCL, and different kind of carcinomas. The staining pattern is membranous.

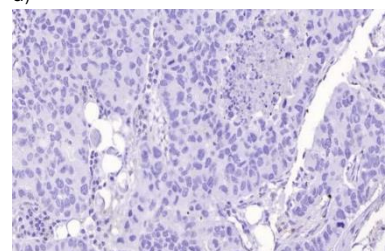
Protocol

1. Deparaffinize and rehydrate tissue section
2. Wash: aqua dest, 2×5 min
3. Pre-treatment: PT-module HIER pH 9.0 (20min at 98°C)
4. H₂O₂ (concentration 3%), 10 min
5. Wash: PBS or TBS buffer, 2×5 min
6. Primary antibody diluted as recommended, 30 min
7. Wash: PBS or TBS buffer, 2×5 min
8. One step HRP-polymer detection, 30 min
9. Wash: PBS or TBS buffer, 2×5 min
10. DAB Substrate, 8 min
11. Wash: aqua dest, 2×2 min
12. Counterstain, dehydrate and coverslip

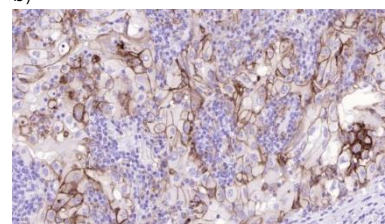
Dilution of concentrated antibody depends on the pre-treatment method and detection system used. Above protocol used in Optibodies evaluation and is meant as a reference. Final working dilution and protocol applied needs to be determined by the user always.



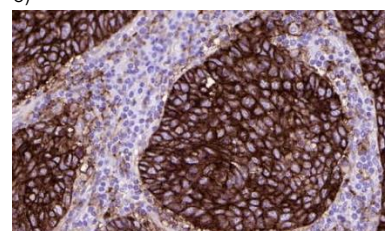
a)



b)



c)



PDL1 stained tissue sections. Tonsil (a) and NSCLC sections (b-d) have been stained using PDL1 optibody (Clone: BSR90) with 1:200 dilution. Tonsil is a good control tissue of the PDL1 immunostaining. Crypt cells of epithelia must be strongly stained with a weak to moderate staining pattern of germinal center macrophages. NSCLC sections with <1% (b), 1-49 % (c), and >50% (d) tumor proportion scores were stained. Note PDL1 stained alveolar macrophages in the stroma of pulmonary carcinoma (d).