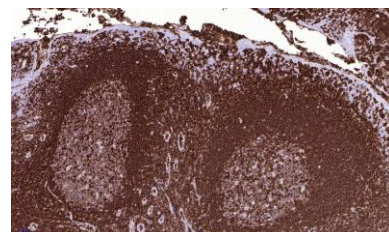


Anti-CD50, rabbit monoclonal (BSR25)

BSH-3020-100 (0.1 ml), BSH-3020-1 (1 ml)



Clonality:	Rabbit monoclonal antibody
Clone:	BSR25
Application:	IHC-P (1:100 - 1:400)
Species Reactivity:	Human
Control tissues:	Appendix, tonsil
Alias names:	ICAM-3
Buffer:	TRIS with 0.03% sodium azide, pH 7.2
Storage:	Store at 4°C



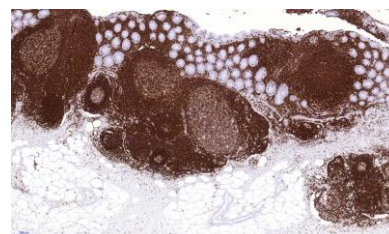
Tonsil section has been stained using CD50 antibody (Clone: BSR25) with 1:200 dilution.

Description

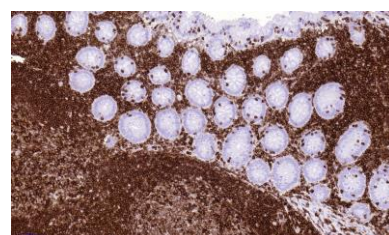
CD50 (ICAM-3) that is expressed in virtually all leukocytes, belongs to the family of the intercellular adhesion molecules. It is also shown to be important part in immune response initiation. CD50 is a useful marker for non-hodgkin's lymphoma and it is expressed in almost all the tumors with tendency to be lost in high grade lymphomas.

Protocol

1. Deparaffinize and rehydrate tissue section
2. Wash: aqua dest, 2×5 min
3. Pre-treatment: PT-module HIER pH 9.0 (20min at 98°C)
4. H₂O₂ (concentration 3%), 10 min
5. Wash: PBS or TBS buffer, 2×5 min
6. Primary antibody diluted as recommended, 30 min
7. Wash: PBS or TBS buffer, 2×5 min
8. One step HRP-polymer detection, 30 min
9. Wash: PBS or TBS buffer, 2×5 min
10. DAB Substrate, 8 min
11. Wash: aqua dest, 2×2 min
12. Counterstain, dehydrate and coverslip



Appendix section has been stained using CD50 antibody (Clone: BSR25) with 1:200 dilution. Lymphatic tissue is strongly stained.



Appendix section has been stained using CD50 antibody (Clone: BSR25) with 1:200 dilution. Lymphatic tissue is strongly stained

Dilution of concentrated antibody depends on the pre-treatment method and detection system used. Above protocol used in Optibodies evaluation and is meant as a reference. Final working dilution and protocol applied needs to be determined by the user always.