

Anti-CD50, rabbit monoclonal (BSR25)

BSH-3020-100 (0,1ml), BSH-3020-1 (1 ml)



Clonality:	Rabbit monoclonal antibody
Clone:	BSR25
Application:	IHC-P (1:100 - 1:400)
Species Reactivity:	Human
Control tissues:	Appendix, tonsil
Alias names:	ICAM-3
Buffer:	TRIS with 0.03% sodium azide, pH 7,2
Storage:	Store at 4°C

Description

CD50 (ICAM-3) that is expressed in virtually all leukocytes, belongs to the family of the intercellular adhesion molecules. It is also shown to be important part in immune response initiation. CD50 is a useful marker for non-hodgkin's lymphoma and it is expressed in almost all the tumors with tendency to be lost in high grade lymphomas.

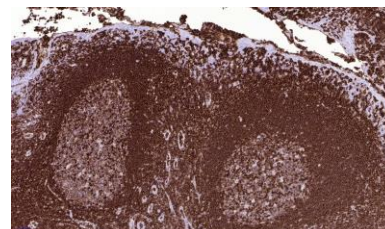
Protocol

After paraffin removing and rehydration:

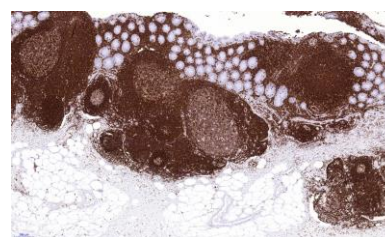
1. Pretreatment: HIER pH9
2. Wash (TBS-Tween)
3. Primary antibody: CD50, 1:100 – 1:400, 30 min.
4. Wash
5. 3% H₂O₂, 10 min.*
6. Wash
7. BioSite Histo HRP One-Step Polymer (KDB-10046), 30 min
8. Wash
9. Wash
10. DAB high contrast Kit (BCB-20032), 10 min
11. Aqua
12. CuSO₄ -post enhancement, 5 min
13. Aqua
14. Counter staining in diluted Mayer, 1 min
15. Bluing, 7 min in tap water
16. Dehydration, clearing and mounting

Dilution of this concentrated antibody depends on the detection system used and the final working dilution need to always be determined by the user.

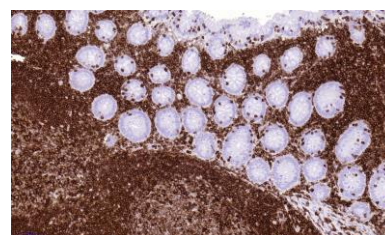
* Optional; Endogenous peroxidase blocking can also be done before primary antibody incubation.



Tonsil section has been stained using CD50 antibody (Clone: BSR25) with 1:200 dilution.



Appendix section has been stained using CD50 antibody (Clone: BSR25) with 1:200 dilution. Lymphatic tissue is strongly stained.



Appendix section has been stained using CD50 antibody (Clone: BSR25) with 1:200 dilution. Lymphatic tissue is strongly stained.