

## Anti-LI-Cadherin, mouse monoclonal (BS26)

BSH-3016-100 (0,1ml), BSH-3016-1 (1 ml)



<b>Clonality:</b>	Mouse monoclonal antibody
<b>Clone:</b>	BS26
<b>Application:</b>	IHC-P
<b>Species Reactivity:</b>	Human
<b>Control tissues:</b>	Appendix, colon
<b>Buffer:</b>	TRIS with 0.03% sodium azide, pH 7,2
<b>Storage:</b>	Store at 4°C

### Description

LI-Cadherin (Cadherin-17, CDH17), is a liver-intestinal cadherin and it belongs to the cadherin superfamily. The structure and cellular locations of LI-Cadherin differs from other cadherins such as: E-CAD, N-CAD, and P-CAD. In healthy individuals, LI-Cadherin is only expressed in the epithelium of the appendix, colon, and intestine. LI-Cadherin is also expressed in colorectal carcinomas and in some gastric and pancreatic adenocarcinomas.

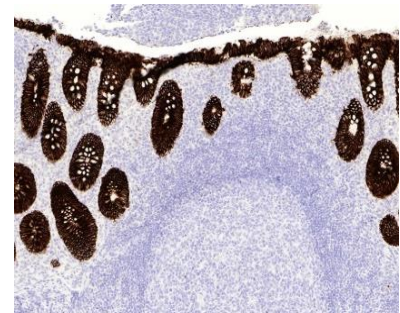
### Protocol

After paraffin removing and rehydration:

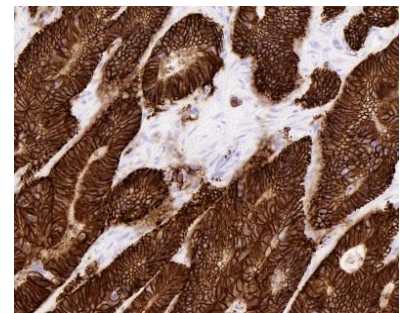
1. Pretreatment: HIER pH9
2. Wash (TBS-Tween)
3. Primary antibody: LI-Cadherin 1:100 - 1:300, 30 min.
4. Wash
5. 3% H<sub>2</sub>O<sub>2</sub>, 10 min.\*
6. Wash
7. BioSite Histo HRP One-Step Polymer (KDB-10007), 30 min
8. Wash
9. Wash
10. DAB high contrast Kit (BCB-20032), 10 min
11. Aqua
12. CuSO<sub>4</sub> -post enhancement, 5 min
13. Aqua
14. Counter staining in diluted Mayer, 1 min
15. Bluing, 7 min in tap water
16. Dehydration, clearing and mounting

Dilution of this concentrated antibody depends on the detection system used and the final working dilution need to always be determined by the user.

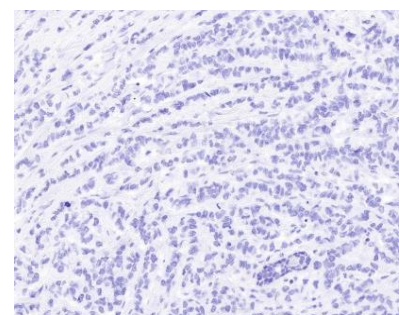
\* Optional; Endogenous peroxidase blocking can also be done before primary antibody incubation.



a)



b)



c)

**LI-Cadherin stained tissue sections.** Appendix (a), colon carcinoma (b), and ductal breast carcinoma (c) were stained using LI-Cadherin antibody (Clone: BS26) with a 1:200 dilution. Columnar epithelial cells of appendix and colon carcinoma exhibit a strong membranous staining pattern (a and b). No staining observed in ductal breast carcinoma (c).