

Anti-CD38, rabbit monoclonal (BSR7)

BSH-3009-100 (0,1ml), BSH-3009-1 (1 ml)



Clonality:	Rabbit monoclonal antibody
Clone:	BSR7
Application:	IHC-P (1:100 – 1:400), IHC-Fro
Species Reactivity:	Human
Control tissues:	Tonsil, appendix
Buffer:	TRIS with 0.03% sodium azide, pH 7,2
Storage:	Store at 4°C

Description

CD38 is a type II integral membrane glycoprotein which is present on early B and T cell lineages and activated B and T cells but is absent from most mature resting peripheral lymphocytes. CD38 is also found on thymocytes, pre-B cells, germinal center B cells, mitogen-activated T cells, monocytes and Ig-secreting plasma cells. On hematopoietic cells CD38 induces activation, proliferation, and differentiation of mature T and B cells and mediates apoptosis of myeloid and lymphoid progenitor cells. CD38 marker is useful for lymphoma diagnostic eg. using in plasmacytoma diagnostic.

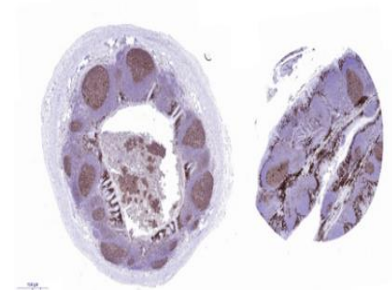
Protocol

After paraffin removing and rehydration:

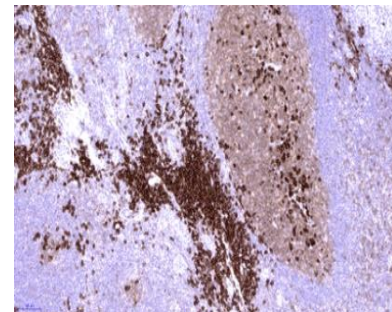
1. Pre-treatment: PT-module HIER pH9 (20min at 98°C)
2. Wash (TBS-Tween in all washing steps)
3. Primary antibody: CD38 1:100 – 1:400, 30 min.
4. Wash
5. Peroxidase blocking (3% H₂O₂), 10 min.
6. Wash
7. One step HRP-polymer detection, 30 min
8. Wash x2
9. DAB-Substrate, 10 min
10. Aqua
11. CuSO₄ -post enhancement, 5 min
12. Aqua

Counter staining, Bluing, dehydration, clearing, and mounting.

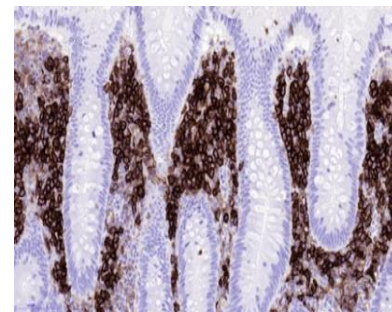
Dilution of concentrated antibody depends on the pre-treatment method and detection system used. Above protocol used in Optibodies evaluation and is meant as a reference. Final working dilution and protocol applied needs to be determined by the user always.



Appendix section has been stained using CD38 optibody (BSR7) with 1:200 dilution. Plasma cells have strong membranous label. Maturing B-cells in germinal center stained with moderate membranous staining pattern.



Tonsil section has been stained using CD38 optibody (BSR7) with 1:200 dilution. Plasma cells have strong membranous label. Maturing B-cells in germinal center stained with moderate membranous staining pattern.



Appendix section has been stained using CD38 optibody (BSR7) with 1:200 dilution. Plasma cells have strong membranous label. Maturing B-cells in germinal center stained with moderate membranous staining pattern.