

Anti-CD38, rabbit monoclonal (BSR7)

BSH-3009-100 (0.1 ml), BSH-3009-1 (1 ml)



Clonality:	Rabbit monoclonal antibody
Clone:	BSR7
Application:	IHC-P (1:100 – 1:400), IHC-Fro
Species Reactivity:	Human
Control tissues:	Tonsil, appendix
Buffer:	TRIS with 0.03% sodium azide, pH 7.2
Storage:	Store at 4°C

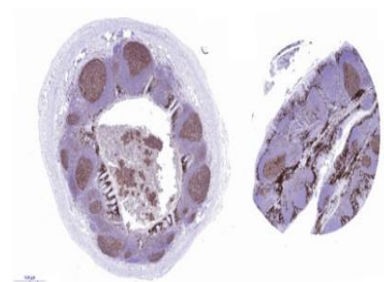
Description

CD38 is a type II integral membrane glycoprotein which is present on early B and T cell lineages and activated B and T cells but is absent from most mature resting peripheral lymphocytes. CD38 is also found on thymocytes, pre-B cells, germinal center B cells, mitogen-activated T cells, monocytes and Ig-secreting plasma cells. On hematopoietic cells CD38 induces activation, proliferation, and differentiation of mature T and B cells and mediates apoptosis of myeloid and lymphoid progenitor cells. CD38 marker is useful for lymphoma diagnostic eg. using in plasmacytoma diagnostic.

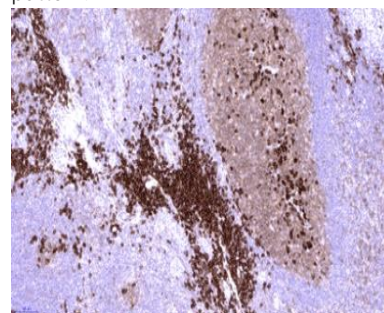
Protocol

1. Deparaffinize and rehydrate tissue section
2. Wash: aqua dest, 2×5 min
3. Pre-treatment: PT-module HIER pH 9.0 (20min at 98°C)
4. H₂O₂ (concentration 3%), 10 min
5. Wash: PBS or TBS buffer, 2×5 min
6. Primary antibody diluted as recommended, 30 min
7. Wash: PBS or TBS buffer, 2×5 min
8. One step HRP-polymer detection, 30 min
9. Wash: PBS or TBS buffer, 2×5 min
10. DAB Substrate, 8 min
11. Wash: aqua dest, 2×2 min
12. Counterstain, dehydrate and coverslip

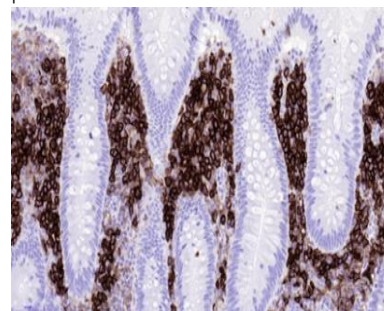
Dilution of concentrated antibody depends on the pre-treatment method and detection system used. Above protocol used in Optibodies evaluation and is meant as a reference. Final working dilution and protocol applied needs to be determined by the user always.



Appendix section has been stained using CD38 optibody (BSR7) with 1:200 dilution. Plasma cells have strong membranous label. Maturing B-cells in germinal center stained with moderate membranous staining pattern.



Tonsil section has been stained using CD38 optibody (BSR7) with 1:200 dilution. Plasma cells have strong membranous label. Maturing B-cells in germinal center stained with moderate membranous staining pattern.



Appendix section has been stained using CD38 optibody (BSR7) with 1:200 dilution. Plasma cells have strong membranous label. Maturing B-cells in germinal center stained with moderate membranous staining pattern.