

Anti-BCL-6, mouse monoclonal (BS19)

BSH-2011-100 (0,1ml), BSH-2011-1 (1 ml)



Clonality:	Mouse monoclonal antibody
Clone:	BS19
Application:	IHC-P (1:100 – 1:400)
Species Reactivity:	Human, mouse, rat, pig, sheep
Control tissues:	Tonsil, appendix
Buffer:	TRIS with 0.03% sodium azide, pH 7,2
Storage:	Store at 4°C

Description

The BCL6 protein is a nuclear zinc finger transcription factor with a N-terminal POZ domain. BCL6 protein is a transcriptional repressor and is necessary for germinal center formation. BCL6 protein is sequence-specific repressor of transcription and in germinal centers it is inhibit differentiation of germinal centre B-cells to plasma cells. In lymphatic tissues, BCL6 is expressed mostly in germinal centre B-cells in dark and light zones of germinal centers. BCL6 is useful especially for germinal centre neoplasms including eg. follicular lymphoma, DLBCL, burkitt lymphoma and lymphocyte predominant Hodgkin lymphoma as well.

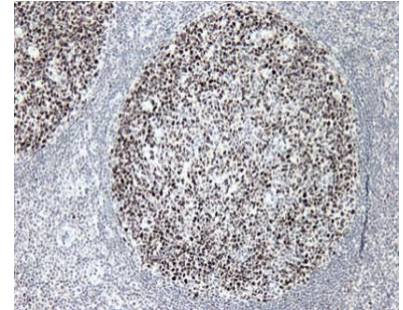
Protocol

After paraffin removing and rehydration:

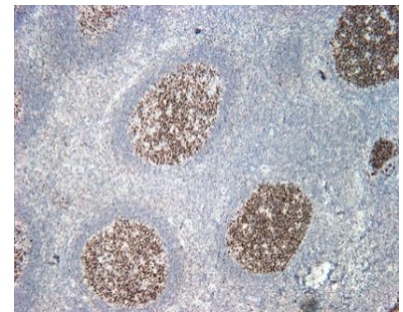
1. Pretreatment: HIER pH9
2. Wash (TBS-Tween)
3. Primary antibody: BCL-61:100 – 1:400, 30 min.
4. Wash
5. 3% H₂O₂, 10 min.*
6. Wash
7. BioSite Histo HRP One-Step Polymer (KDB-10007), 30 min
8. Wash
9. Wash
10. DAB high contrast Kit (BCB-20032), 10 min
11. Aqua
12. CuSO₄ -post enhancement, 5 min
13. Aqua
14. Counter staining in diluted Mayer, 1 min
15. Bluing, 7 min in tap water
16. Dehydration, clearing and mounting

Dilution of this concentrated antibody depends on the detection system used and the final working dilution need to always be determined by the user.

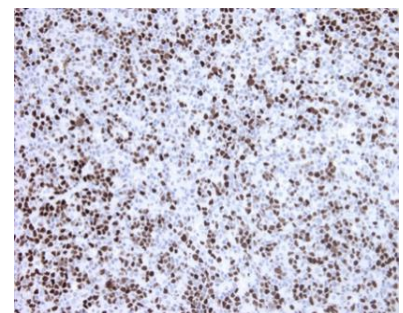
* Optional; Endogenous peroxidase blocking can also be done before primary antibody incubation.



Tonsil section has been stained using BCL6 optibody (Clone: BS19) with 1:200 dilution. Inter follicular B-cells stained strongly with nuclear staining pattern.



Tonsil section has been stained using BCL6 optibody (Clone: BS19) with 1:200 dilution. Inter follicular B-cells stained strongly with nuclear staining pattern.



DLBCL section has been stained using BCL6 optibody (Clone: BS19) with 1:200 dilution. Lymphoma cells stained strongly with nuclear staining pattern.