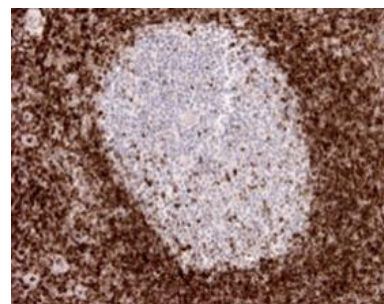


## Anti-BCL-2, mouse monoclonal (BS94)

BSH-2001-100 (0.1 ml), BSH-2001-1 (1 ml)



<b>Clonality:</b>	Mouse monoclonal antibody
<b>Clone:</b>	BS94
<b>Application:</b>	IHC-P (1:100 – 1:400), IHC-fro
<b>Species Reactivity:</b>	Human
<b>Control tissues:</b>	Tonsil, appendix
<b>Buffer:</b>	TRIS with 0.03% sodium azide, pH 7.2
<b>Storage:</b>	Store at 4°C



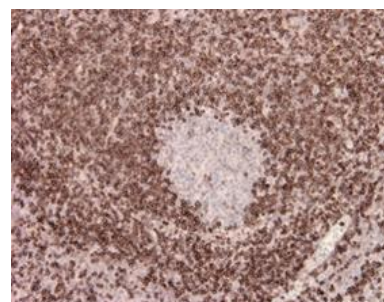
Tonsil section has been stained using BCL2 optibody (Clone: BS94) with 1:200 dilution. All peripheral lymphocytes should be labelled and the most of the germinal center B-cells should be negatively stained from tonsil sections.

### Description

B-cell lymphoma/leukaemia-2 (Bcl-2) is an inhibitor of apoptosis, and its expression is generally abundant in cells which dividing and differentiating. In lymphatic tissue, Bcl-2 is highly expressed in T-cells, maturing B cells as well as mature B-cells. However, expression level in germinal center B-cells is downregulated. Overexpression of the Bcl-2 is common in leukemia and various carcinomas and sarcomas. Overexpression is common especially in non-Hodgkins lymphoma. Bcl-2 is helpful to classification of the follicular lymphoma or other lymphomas.

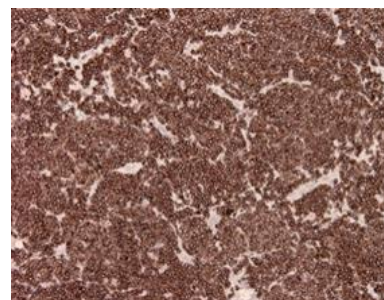
### Protocol

1. Deparaffinize and rehydrate tissue section
2. Wash: aqua dest, 2×5 min
3. Pre-treatment: PT-module HIER pH 9.0 (20min at 98°C)
4. H<sub>2</sub>O<sub>2</sub> (concentration 3%), 10 min
5. Wash: PBS or TBS buffer, 2×5 min
6. Primary antibody diluted as recommended, 30 min
7. Wash: PBS or TBS buffer, 2×5 min
8. One step HRP-polymer detection, 30 min
9. Wash: PBS or TBS buffer, 2×5 min
10. DAB Substrate, 8 min
11. Wash: aqua dest, 2×2 min
12. Counterstain, dehydrate and coverslip



Lymph node section has been stained using BCL2 optibody (Clone: BS94) with 1:200 dilution. Leukemia cells stained strongly with cytoplasmic staining pattern.

Dilution of concentrated antibody depends on the pre-treatment method and detection system used. Above protocol used in Optibodies evaluation and is meant as a reference. Final working dilution and protocol applied needs to be determined by the user always.



Lymph node section has been stained using BCL2 optibody (Clone: BS94) with 1:200 dilution. Mantle cell lymphoma cells stained strongly.